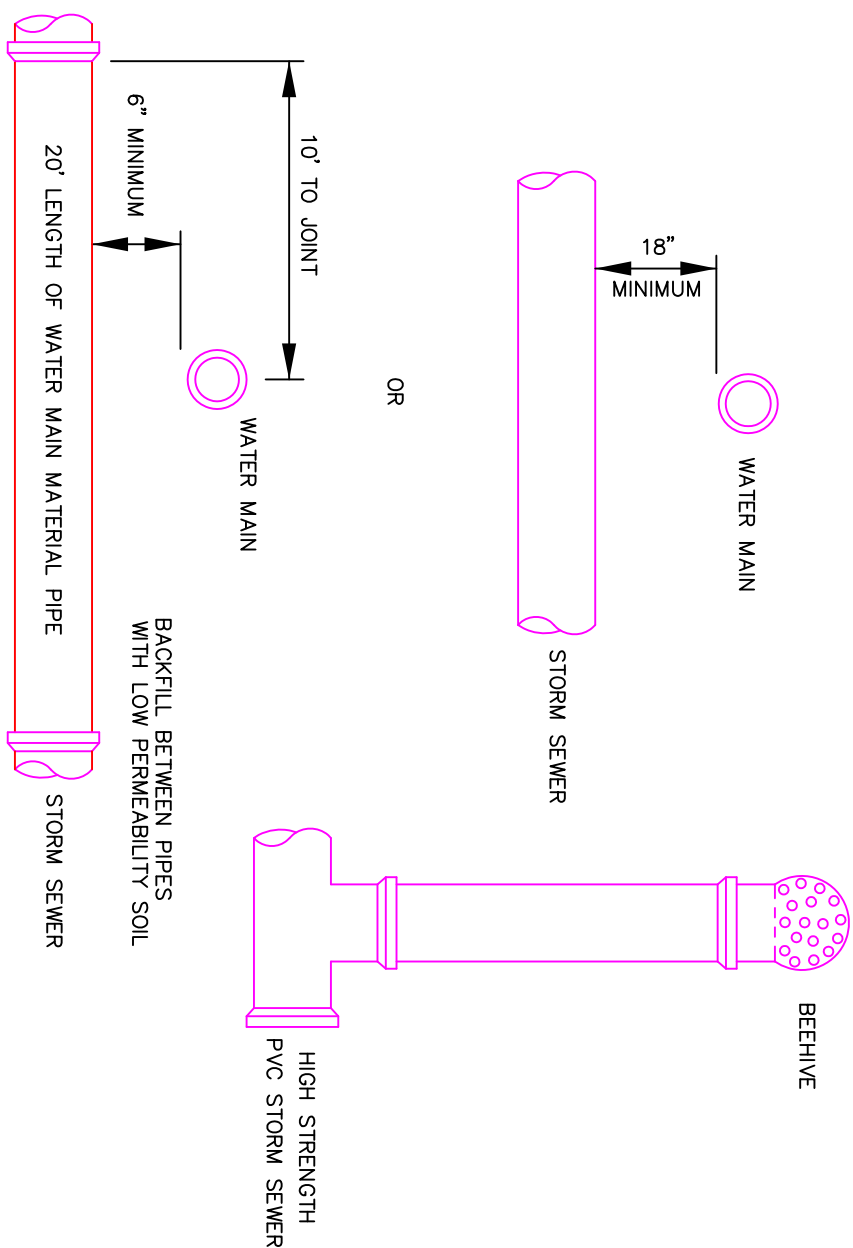
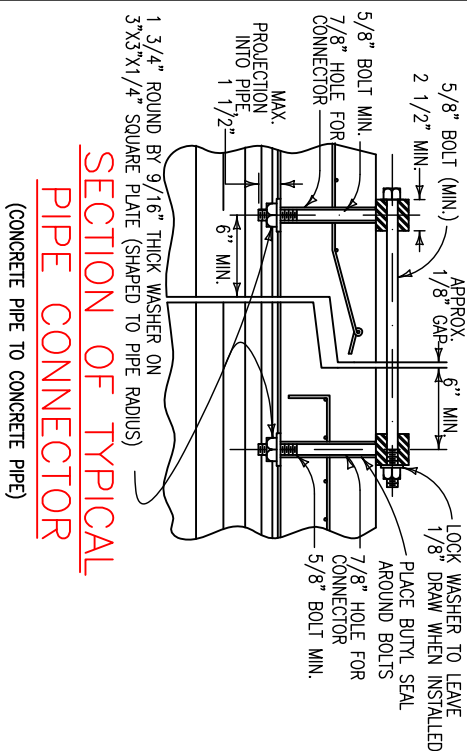


## LATERAL SEPARATION



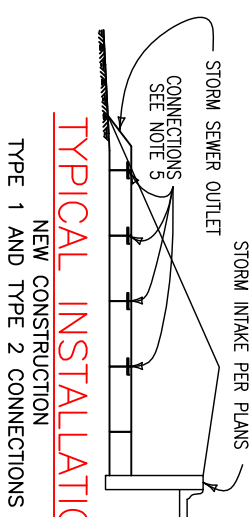
FILE NO.: 2400-021	CEDAR RAPIDS METROPOLITAN AREA STANDARD DETAILS FOR PUBLIC IMPROVEMENTS	
APPROVAL DATE: AUG 1999		
REVISION NO.:		
REVISION DATE:		
	STORM SEWER/WATER MAIN PIPE SEPARATION REQUIREMENTS	NO. 2400-021

PROJECT NO: HX0789	DRAWN BY: BGA APPROVED BY: GMH DATE: 10/10/2012				/ / /
					/ / /
					/ / /
					/ / /
	NO.	REVISION DESCRIPTION	APPROVED	DATE	
					/ / /



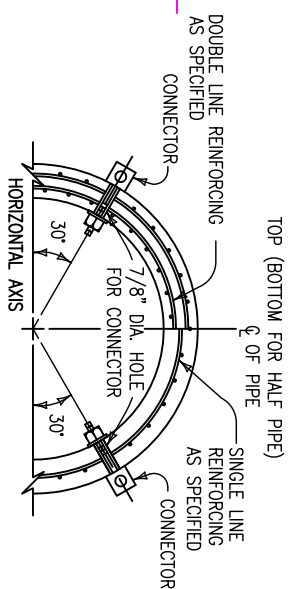
## SECTION OF TYPICAL PIPE CONNECTOR

(CONCRETE PIPE TO CONCRETE PIPE)



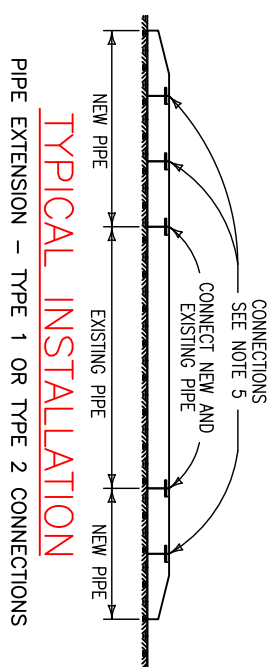
## TYPICAL INSTALLATION

NEW CONSTRUCTION  
TYPE 1 AND TYPE 2 CONNECTIONS



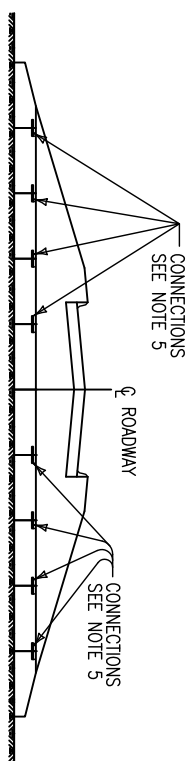
## TYPICAL SECTION

TYPE 1 CONNECTION (SEALED JOINT)  
TYPE 2 CONNECTION (NON-SEALED JOINT)



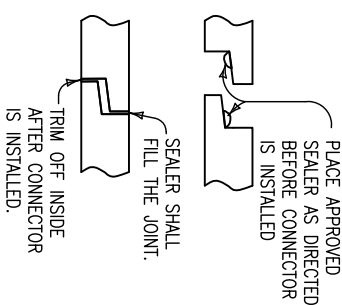
## TYPICAL INSTALLATION

### PIPE EXTENSION - TYPE 1 OR TYPE 2 CONNECTIONS



## TYPICAL INSTALLATION

NEW CONSTRUCTION - TYPE 1 OR TYPE 2 CONNECTIONS



## DETAILS OF

**SEALED JOINT**  
(TYPE 1 CONNECTION ONLY)

NOTES:

1. DETAILS ARE FOR TWO TYPES OF CONNECTIONS FOR CONCRETE CULVERT AND STORM SEWER PIPE. ALTERNATE DESIGNS, METHODS OR MATERIALS MAY BE SUBMITTED TO THE ENGINEER FOR APPROVAL.
2. THE TYPE 1 PIPE CONNECTION SHALL ORDINARILY BE USED AS SHOWN WITH TWO CONNECTORS NEAR THE TOP OF THE PIPE SECTION. ALL JOINTS WHERE TYPE 1 PIPE CONNECTIONS ARE USED SHALL BE SEALED. THE SEAL SHALL MEET THE REQUIREMENTS OF SECTION 02400.
3. THE TYPE 2 PIPE CONNECTION SHALL ORDINARILY BE USED AS SHOWN WITH TWO CONNECTORS NEAR THE TOP OF THE PIPE SECTION. NO JOINT SEALER IS REQUIRED WITH TYPE 2 CONNECTIONS.
4. REFER TO DETAIL PROJECT PLANS FOR ADDITIONAL DETAILS OF INDIVIDUAL INSTALLATION REQUIRING TYPE 1 OR TYPE 2 CONNECTIONS.
5. NORMAL INSTALLATION INCLUDES INSTALLING CONNECTIONS AT LAST 3 PIPE JOINTS PLUS FLARED END SECTION.

FILE NO.: 2400-023	CEDAR RAPIDS METROPOLITAN AREA STANDARD DETAILS FOR PUBLIC IMPROVEMENTS  INSTALLATION OF CONNECTED PIPE JOINTS		NO. 2400-023
APPROVAL DATE: AUG 1999			
REVISION NO.:			
REVISION DATE:			

 <b>ALLTRANS, INC.</b> 4403 1st Avenue S.E. Cedar Rapids, Iowa 52402 Phone: (319) 393-8726	<b>City of Holy Cross Subdivision No.3</b>  <b>Dubuque County, Iowa</b>	<b>Legend, Standard Details, And Bench Mark</b>  <b>Information</b>
--	---	---