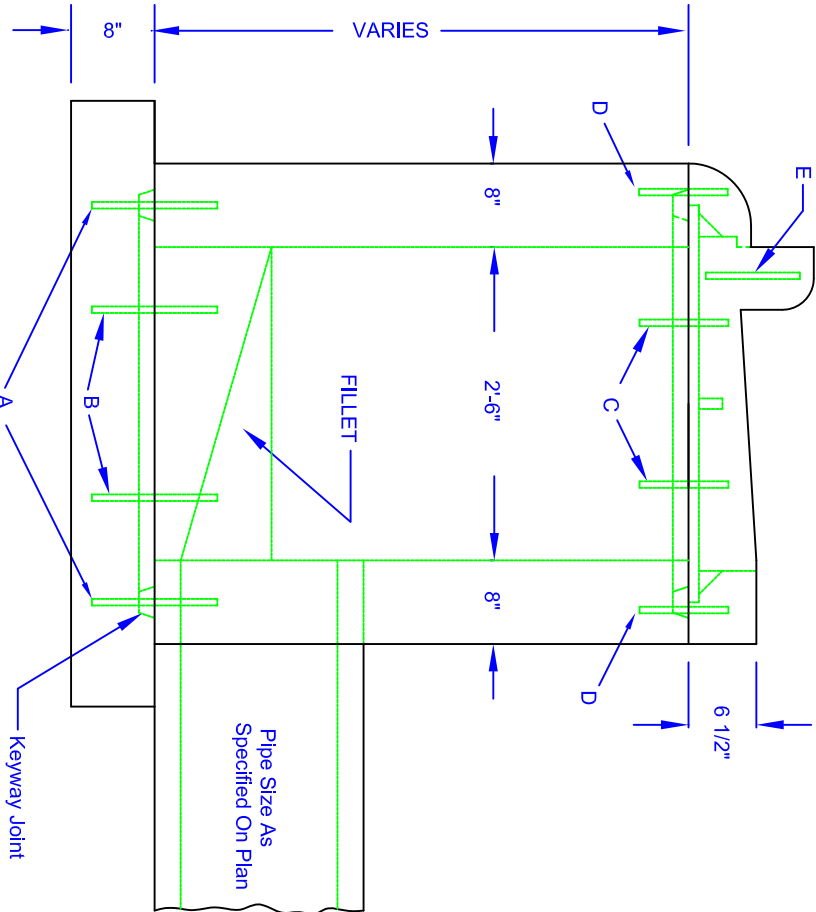



NOTES:

1. CATCH BASINS WILL BE BACKFILLED WITH SELECT MATERIAL APPROVED BY THE CITY. THIS MATERIAL SHALL BE MECHANICALLY COMPACTED IN 6" LIFTS. THE CONST OF THE CATCH BASIN SHOULD INCLUDE BACKFILLING. FRAMES USED IN THIS CATCH BASIN REQUIRE FLANGES TO BE REMOVED WHERE THEY BUTT TOGETHER. THE FRAMES SHALL BE BOLTED TOGETHER.
2. GRATES SHALL BE NEENAH 3246AL.
3. CATCH BASINS DEEPER THAN 6 FEET SHALL INCLUDE #4 BARS ON 12 INCH CENTERS IN BASE AND SIDEWALLS.
4. THE MINIMUM DEPTH FROM GUTTER TO FLOW LINE OF OUTLET PIPE SHALL BE 4.5 FOOT UNLESS OTHERWISE APPROVED.
5. INTAKE SHALL BE SEPARATED FROM ADJACENT RIGID PAVEMENTS BY 1" EXPANSION MATERIAL.

REINFORCING SCHEDULE			
MARK	BAR SIZE	LENGTH	SPACING
A	#4	10"	17 1/2"
B	#4	10"	15"
C	#4	8-1/2"	10"
D	#4	8-1/2"	11"
E	#4	8-1/2"	





THE CITY OF  
**DUBUQUE**  
*Showing the Spirit*

**CITY OF DUBUQUE**  
ENGINEERING DIVISION  
CITY HALL  
100 WEST 13TH STREET  
DUBUQUE, IOWA 52001  
PHONE (563) 589-4270 FAX (563) 589-4205

Drawn By: JIS  
Approved By: JIS  
No. 101-B  
GRATE TYPE CATCH BASIN

Appendix Number: A2-1  
Sheet Number: 1 of 1

PROJECT NO: HX0789  
DRAWN BY: BGA  
APPROVED BY: GMH  
DATE: 10/10/2012

NO.	REVISION	DESCRIPTION	APPROVED	DATE

ALLTRANS, INC.  
4403 1st Avenue S.E.  
Cedar Rapids, Iowa 52402  
Phone: (319) 393-8726

City of Holy Cross Subdivision No.3  
Dubuque County, Iowa

Legend, Standard Details, And Bench Mark  
Information