

PROJECT NO: HX0789

DRAWN BY: BGA  
APPROVED BY: GMH  
DATE: 10/10/2012

NO.	REVISION	DESCRIPTION	APPROVED	DATE

ALLTRANS, INC.

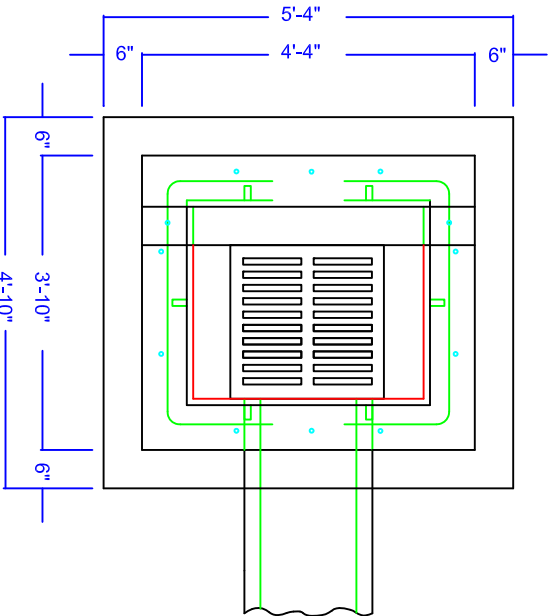
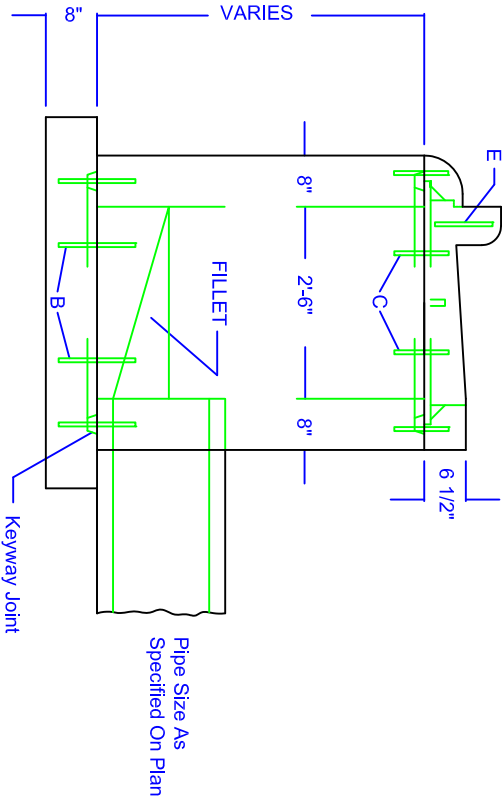
4403 1st Avenue S.E.  
Cedar Rapids, Iowa 52402  
Phone: (319) 393-8726

City of Holy Cross Subdivision No.3

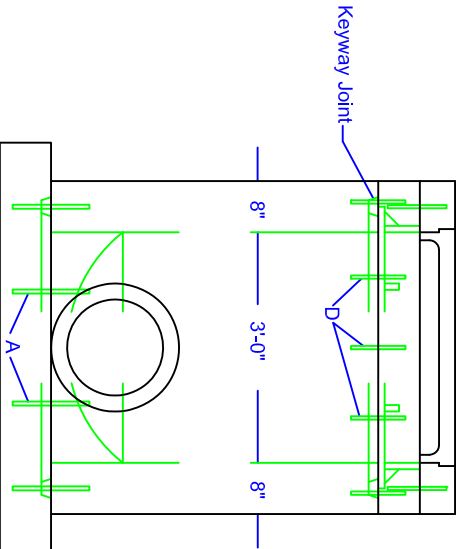
Dubuque County, Iowa

Legend, Standard Details, And Bench Mark Information

SHEET NO.  
B.17  
OF  
B.17



- Notes:
1. Grates shall be Neenah R-3246AL, Asphalt coated or approved equal.
  2. Catch Basins deeper than 6 ft. shall include #4 bars on 12 inch centers in base and sidewalls.
  3. The minimum depth from gutter to intake base shall be 4.5' unless otherwise approved.
  4. Catch Basins will be backfilled with select material approved by the city. This material shall be mechanically tamped in 6" lifts. The Catch Basin shall include backfilling.
  5. Intake shall be separated from adjacent rigid pavements by 1" expansion material



REINFORCING SCHEDULE				
MARK	DIAMETER	LENGTH	NUMBER	SPACING
A	5/8"	1'-0"	4	17'-11/2"
B	5/8"	1'-0"	4	15"
C	5/8"	1'-0"	4	10"
D	5/8"	1'-0"	6	11"
E	5/8"	0'-8"	2	

THE CITY OF  
**DUBUQUE**  
*Showering the Spirit*

**CITY OF DUBUQUE**  
ENGINEERING DIVISION  
10 WEST 3RD STREET  
DUBUQUE, IA 52001  
PHONE (563) 598-4270 FAX (563) 598-4205

Drawn By: JBS	Approved By:	NO. 101-B	Date: 08/07/06
GRATE TYPE CATCH BASIN			
Approval Number	A2-1	Sheet Number:	1 of 1